

SLAB ROLLER



CLAYCORE PTY LTD
47 Newbey St
Milpara, WA 6330

ABN: 69 634 757 029

SAFETY INSTRUCTIONS

- ⚠ ONE PERSON ONLY SHOULD OPERATE THE SLAB ROLLER AT ANY ONE TIME – THIS WILL MINIMISE ACCIDENTAL TURNING OF THE HAND WHEEL.
- ⚠ NEVER PUT YOUR HANDS NEAR THE FEED SIDE OF THE ROLLERS WHILE OPERATING – THE FEED ROLLERS COULD CRUSH FINGERS.
- ⚠ WHEN NOT IN USE OR WHEN UN-SUPERVISED, IT IS ADVISED TO SECURE THE HAND WHEEL TO ONE OF THE LEGS UTILISING A SECURITY CHAIN AND LOCK.

QUICK SET UP GUIDE

TOOLS REQUIRED

- 2 X 10mm SPANNERS
- 2 X 16mm SPANNERS
- 4mm ALLEN (HEX) KEY
- PHILLIPS HEAD SCREW DRIVER

TABLE ASSEMBLY

- 4 X LEGS
- 2 X LONG TABLE RAILS
- 2 X SHORT TABLE RAILS
- 2 X TABLE TOPS
- SLAB ROLLER ASSEMBLY
- HAND WHEEL
- BAG OF HARDWARE

1. BOLT LEGS TO LONG TABLE RAILS

1.1 START ASSEMBLING ON A TABLE/BENCH. HANG THE RAIL OVER THE EDGE OF THE BENCH AND ALIGN THE HOLES OF THE LEG BRACKETS WITH THOSE ON THE ENDS OF THE RAILS;

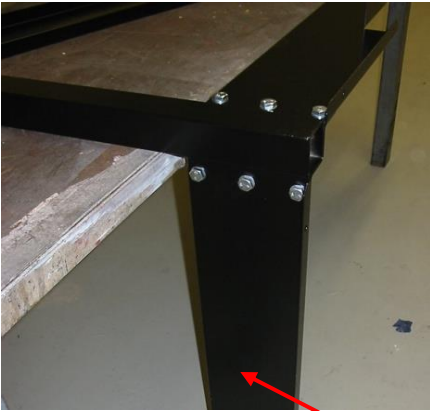
1.2 LOOSELY FASTEN WITH THE M10 BOLTS SUPPLIED. USE 2 WASHERS PER BOLT – A WASHER UNDER THE HEAD OF THE BOLT AND ANOTHER UNDER THE NUT. FOR APPEARANCE IT IS SUGGESTED TO HAVE THE NUTS FACING INSIDE THE TABLE;

1.3 ASSEMBLE BOTH LONG RAILS ONTO THE LEGS.



PLEASE NOTE, IT IS ADVISABLE TO LEAVE ALL FASTENERS HAND TIGHT UNTIL FINAL ASSEMBLY

2. SIMILARLY ASSEMBLE THE TWO SHORT RAILS ONTO THE ONE SIDE YOU HAVE JUST ASSEMBLED. ENSURE THE PRE -DRILLED HOLES IN THE LIP FACE OUTWARDS. HAND TIGHTEN BOLTS.



LIP FACES OUTWARDS

3. FIT THE TWO SIDES TOGETHER. FINISH ASSEMBLING THE TABLE FRAME UPSIDE DOWN ON THE FLOOR. FLIP THE TABLE OVER ONTO ITS LEGS.

4. ATTACHING THE SLAB ROLLER ASSEMBLY

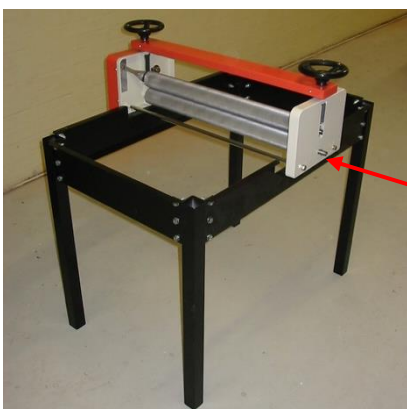
4.1 CAUTION: THE SLAB ROLLER ASSEMBLY IS HEAVY AND HELP MAY BE NEEDED TO LIFT IT INTO POSITION ON THE TABLE FRAME;

4.2 THE ROLLER ASSEMBLY FITS INTO THE CENTRE OF THE TABLE FRAME ONTO THE TWO LIPS THAT PROTRUDE FROM THE LONG SIDE RAILS;

4.3 TWO M6 HEX HEAD BOLTS FASTEN EACH SIDE OF THE ROLLER ONTO THE FRAME. USE TWO WASHERS PER BOLT – ONE UNDER THE HEAD AND THE OTHER UNDER THE NUT;

4.4 AT THIS STAGE FIT BUT DO NOT TIGHTEN THE FOUR BOLTS;

4.5 FIT THE HAND WHEEL TO THE SHAFT AND TIGHTEN WITH A 4mm ALLEN (HEX) KEY.



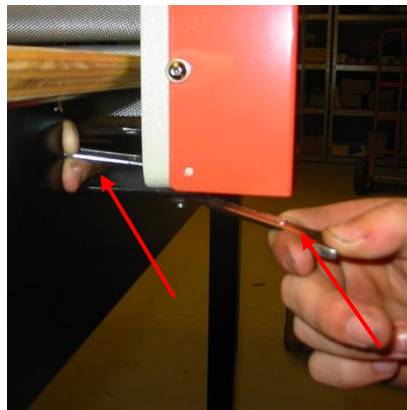
SHAFT FOR HAND WHEEL

5 ATTACHING THE TABLE TOPS

5.1 PLACE THE TABLE TOPS EITHER SIDE OF THE ROLLER ASSEMBLY WITH THE TAPERED EDGE FACING DOWN. USING COUNTERSUNK BOLTS, LOOSELY SECURE THE TABLE TOPS TO THE FRAME. SLOWLY ROLL THE HAND WHEEL AND ADJUST THE POSITION OF THE ROLLER ASSEMBLY ON THE TABLE SO THAT THE ROLLERS DO NOT SCRAPE THE WOODEN TABLE TOPS.

5.2 MAKE SURE THE ROLLERS ARE CENTERED ON THE TABLE TOPS THEN TIGHTEN THE BOLTS THAT FASTEN THE ROLLER ASSEMBLY TO THE TABLE WITH TWO 10MM SPANNERS.

5.3. SECURELY TIGHTEN FASTENERS.



ADDITIONAL INFORMATION

- ADJUST THE DESIRED SLAB THICKNESS USING ONE OF THE HAND WHEELS ON THE TOP OF THE MACHINE.
 1. LAY ONE SHEET OF CANVAS ONTO THE TABLE;
 2. PLACE THE SLAB OF CLAY ONTO THE CANVAS AND COVER WITH THE SECOND SHEET;
 3. ENTER THE CANVASES INTO THE ROLLERS AND THEN SLOWLY WIND THE HAND WHEEL TO DRAW IT THROUGH.
- ALWAYS USE CANVAS ON BOTH SIDES OF THE CLAY WHEN RUNNING THROUGH THE ROLLERS.
- FOR THIN SLABS: WIND THE HAND WHEEL WITH ONE HAND AND KEEP TENSION ON THE SHEETS THROUGH WITH THE OTHER HAND TO PREVENT THE SLAB BENDING. IT IS ALSO ADVISED TO ROLL THE CLAY A NUMBER OF TIMES AT DECREASING THICKNESSES RATHER THAN TRYING TO DO IT WITH ONE PASS.
- FOR WIDE SLABS: LAY MULTIPLE PIECES OF CLAY SIDE BY SIDE WITH A SMALL OVERLAP BETWEEN THEM. AFTER GOING THROUGH THE ROLLERS THE SLAB WILL BE MEDED TOGETHER. DEFECTS OR TEARS IN THE SLAB CAN BE REPAIRED IN A SIMILAR WAY.

THANK YOU FOR PURCHASING A VENCO SLAB ROLLER.